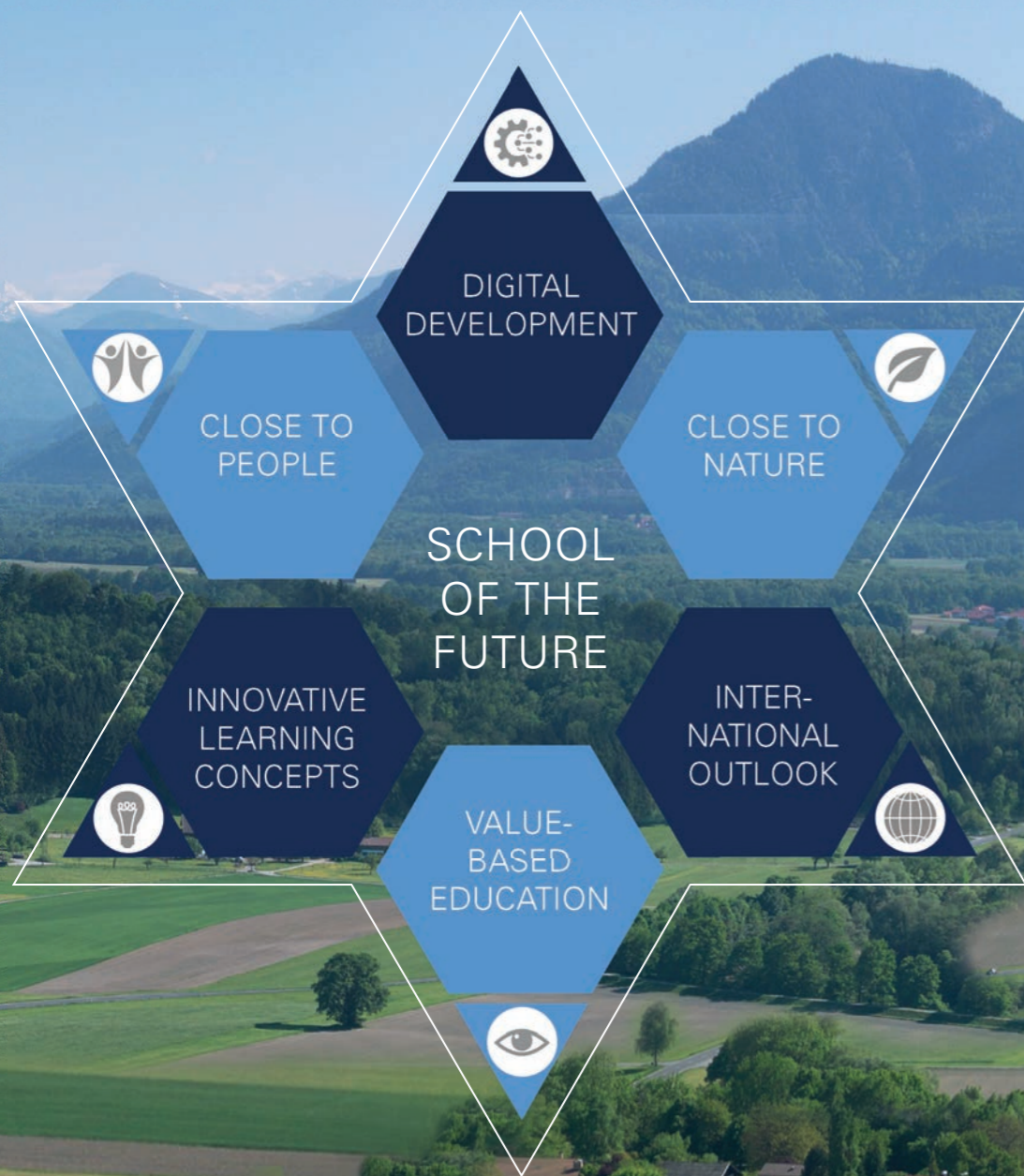




SCHLOSS NEUBEUERN
CONFIDENT. UNIQUE. COSMOPOLITAN.



SCHOOL OF THE FUTURE



NEUBEUERN HAS ALWAYS HAD AN EYE FOR THE BIGGER PICTURE

The school's historic site at the heart of beautiful countryside offers more than just wonderful views of the expansive Inn Valley.

More importantly, it inspires and instills us with the energy we need to face the challenges of a globalized world characterized by an increasingly fast pace of change. What makes us special is our desire to base our thoughts and actions on fundamental values that give us direction and backbone throughout our lives.

SCHLOSS NEUBEUERN

In 2025 we celebrate the 100th anniversary of Schloss Neubeuern. It is with pride that we look back on the history of our school as a small yet vibrant community forged and inspired by its own characteristic spirit. Over the decades, we have earned a place among the elite of European boarding schools and developed a strong global network.



Baroness Julie von Wendelstadt with Headmaster Josef Rieder and the staff and pupils of the Landschulheim in 1930.

SCHLOSS NEUBEUERN BOARDING & DAY SCHOOL

Our sense of social responsibility motivates us to not only educate the pillars of tomorrow's society, but also empower them to understand and fulfil their own responsibilities.



The advent of modern technology makes it possible for almost anyone to access knowledge wherever and whenever they wish. As a result, educational institutions must not only accept that education is no longer simply a matter of imparting knowledge, but also identify areas in which conventional school lessons need to be adapted to the modern world.

Schloss Neubeuern has earned international acclaim for its pioneering Digital Ink programme facilitating highly personalized, paperless learning. Our modern, high-speed campus gives pupils on-

demand access to digital learning materials and provides a perfect environment for the acquisition of a variety of essential 21st-century skills. As important as they are, such skills are nevertheless only one element in the equation for a successful post-school life.

Now more than ever, we are convinced that education must also extend to personal development and the cultivation of values. As educators, we therefore see it as our responsibility to empower pupils to utilize both their individual talents and the knowledge they acquire in a successful and socially responsible manner.

The adoption of this type of value-based approach is particularly important in the case of anyone entrusted with a position of power. Above all, a leader worthy of the name must first be fully conscious of the responsibility that goes with their role. Given the intense media scrutiny of even the slightest lapse in the moral judgement of today's business leaders and politicians, an education that includes the cultivation of moral values is now more important than ever before. Here at Schloss Neubeuern, we firmly believe that commercial success and a sound set of ethical values are far from being a contradiction in terms, and should always be of mutual benefit to one another.

As an international, achievement-oriented boarding and day school where girls



Knowledge, independent thought, responsibility, mindfulness, openness, community and tradition: The values upon which Schloss Neubeuern is founded, beautifully rendered in glass by one of our alumni, the artist Florian Lechner.

and boys work towards gaining Bavaria's central school-leaving qualifications, we are dedicated to supporting our pupils as they develop into confident young

people who are not only fully aware of their ethical and moral responsibilities in an economic and social sense, but also ideally prepared to fulfil them.

A person can only truly be regarded as a "pillar of society" if they push themselves to realize their full potential, combine outstanding aptitude and achievements with a responsible, humanitarian approach, stride through life with freedom and confidence and, in doing so, set a shining example for others.

We therefore place special emphasis on the personal development of each and every pupil rather than focusing purely on their academic performance. Thanks to our unique educational approach, values such as independent thought, responsibility, mindfulness, openness, community and tradition are not simply taught, but actively applied in everyday school life, systematized in our in-house feedback and evaluation model and firmly integrated into our educational concept.

By the time they leave us, our pupils have internalized a moral compass that puts them in a position to take responsible decisions in all aspects of life. In addition, our multi-phase responsibility system enables them to gradually learn to take on more responsibility for both themselves and those around them.

We offer a wealth of opportunities for personal development, for example extra-curricular programmes and projects,



Jörg Schönfeld
Chair of the School Foundation
Foundation management and finances



Susanne Schörghuber
Head of Boarding



Manfred Forstner
Assistant principal

the targeted testing and fostering of individual talents, the passing on of traditions and values and guidance on the issue of responsibility. Our educational concept has been developed, modernized and refined over a period of decades, and it is our firm belief that it empowers our pupils to realize their full potential and mature into responsible, successful adults.



NATURWISSENSCHAFTLICHES ZENTRUM
SCHLOSS NEUBEUERN

Over a decade of intensive groundwork has paid off, and the school is now operating at an even higher and more sustainable level of quality than before. Not content to rest on our laurels, we recently initiated an ambitious construction project that will result in the creation of a new Science Centre in which our pupils will also be able to carry out self-managed experiments and research.

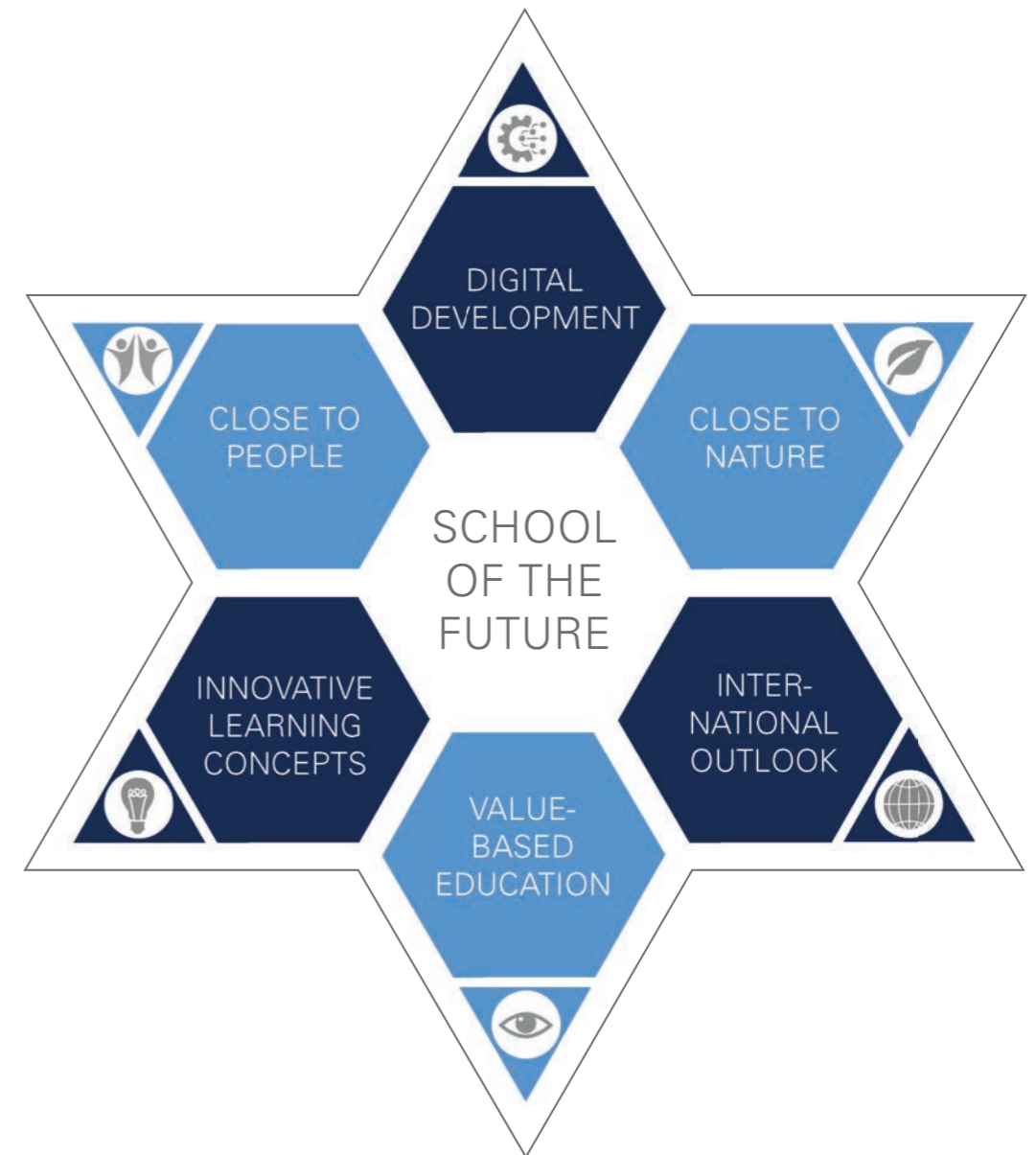
It goes without saying that such state-of-the-art facilities are only as good as the pupils and teachers who use them. Working in close cooperation with the independent Schloss Neubeuern Scholarship Fund, we constantly strive to increase the amount of funds available for scholarships, thus giving even more young people access to an outstanding Schloss Neubeuern education their parents would otherwise be unable to afford.

We cordially invite you to see this magical place for yourself. You will feel welcome from the moment you arrive!





A PERFECT BLEND OF ACADEMIC EDUCATION AND PERSONAL DEVELOPMENT



Confident. Unique. Cosmopolitan.

Our goal is to prepare children and young people for a successful life in an international context. We therefore strive for nothing but the utmost in quality in all aspects of school life. In addition to a forward-looking academic education, all our pupils benefit from the chance to discover and develop their individual strengths as participants in a broad variety of guilds, social services and community-focused projects. The resultant increase in their self-esteem has a positive effect on the overall learning environment. The Neubeuern community is characterized by a strong sense of friendship and cohesion, and we are proud that all members of the school treat each other with openness, fairness and respect.

< Schloss Neubeuern awards the Erich Proebst Prize to sixth-form pupils for outstanding achievements and special commitment to social issues. The prize has been sponsored by the Proebst family since 1935.

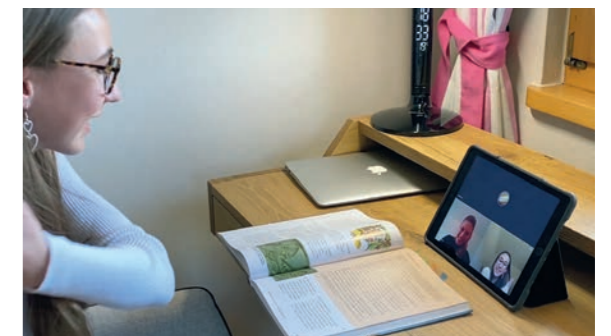
ACADEMIC EDUCATION

PERSONAL DEVELOPMENT





DIGITAL EDUCATION CUTTING-EDGE LEARNING – ANYWHERE, ANYTIME



Digital Ink

Every classroom is equipped with a data projector, Microsoft Wireless Display Adaptor, Apple TV and gigabit-speed wireless internet. This empowers teaching staff to deliver interesting, media-assisted lessons and give pupils a subject-specific education in the use of modern digital technology. From as early as Year 5, the use of school iPads in lessons, for homework and during leisure time enables pupils to gain a wealth of valuable IT experience. All lessons in Year 9 and above are delivered as part of the school's Digital Ink programme. Tablet PCs replace exercise books, folders and pencil cases and make it possible for pupils to file their schoolwork in a structured, interdisciplinary way. The overall result is an interactive multimedia learning environment that facilitates a shift away from conventional teacher-centred lessons and opens the door to new, innovative teaching methods. Among other benefits, the school's digital expertise enables it to make a smooth and immediate switch to effective distance learning formats when circumstances require.

UP TO DATE TODAY –
WELL PREPARED FOR TOMORROW



Artificial intelligence

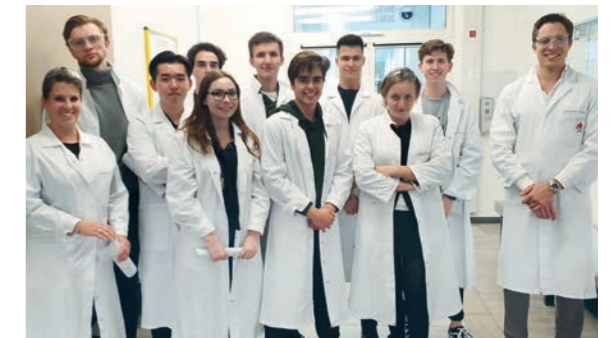
Schloss Neubeuern maintains its status as a beacon school for digital learning by keeping up to date with cutting-edge technologies. Areas in which the school is an early adopter include the integration of virtual and mixed reality into the classroom as well as the use of AI-assisted humanoid robots in language lessons.

It goes without saying that the school is aware of its responsibilities in this area. This is reflected in the introduction of a new subject in years 5 to 8: Medi@ – Fit for the Media Age.





INNOVATIVE LEARNING CONCEPTS OFF THE BEATEN TRACK



Science Centre

From the 2021/2022 school year onwards Schloss Neubeuern will be placing greater emphasis on scientific subjects without reducing its existing focus on economic disciplines.

In particular, the construction of its new Science Centre will enable the school to cater even more closely to pupils' individual strengths, talents and interests.

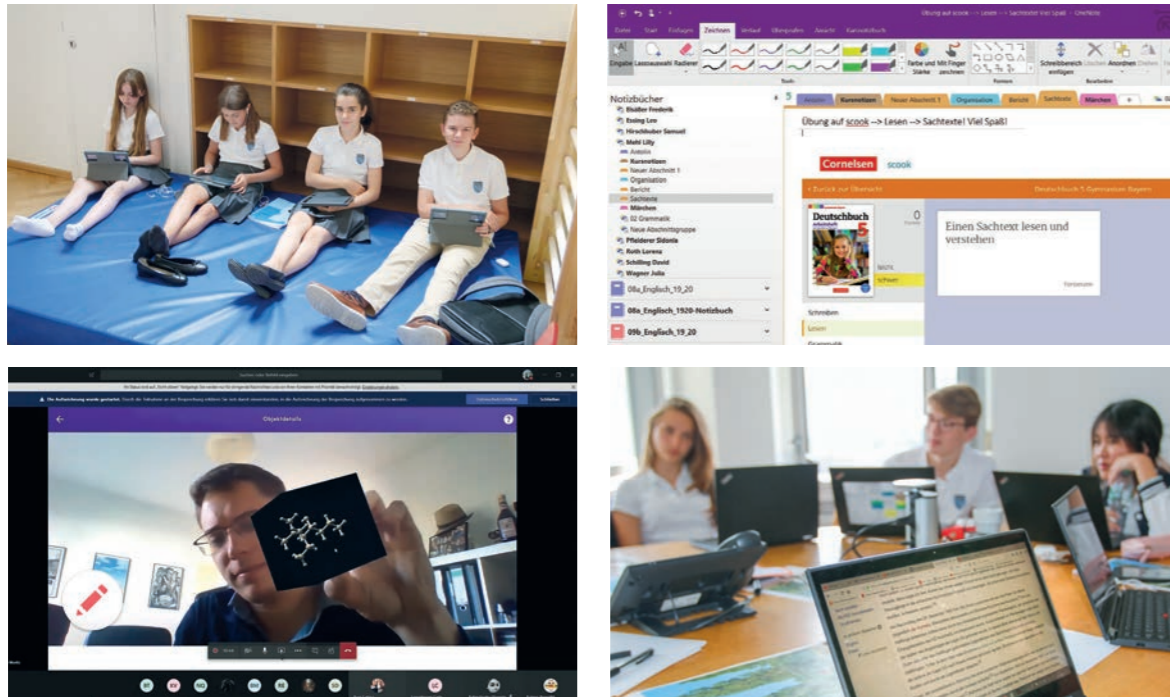
Schloss Neubeuern actively fosters ties with universities keen to attract talented students. According to university professors, many school-leavers arrive underprepared for the challenges of a degree in the fields of economics, mathematics, computer science, natural science, technology and engineering. Schloss Neubeuern sees this as an opportunity, and plans to use targeted scholarships as a foundation for a long-term push towards scientific excellence that will also benefit businesses and the economy as a whole.



Schloss Neubeuern Science Centre

Equipped with the latest technology, the new Science Centre will offer pupils the chance to carry out experiments in their free time and prepare entries for science competitions.

SELF-MANAGED LEARNING



Individualization and the inverted classroom

Schloss Neubeuern has long been an active proponent of individualized learning. In an inversion of traditional methods, pupils in years 9 and 10 in particular are given responsibility for acquiring new knowledge outside of conventional lesson time. The requisite “learning blocks” are made available on a web-based learning platform that can be accessed anywhere, anytime.

The blocks feature educational videos as their central component, and allow pupils to work through the key content of the respective school year at their own speed and in whatever order they choose. They are naturally accompanied on their learning journey by their teachers, mentors and parents, who can access the learning platform in order to gain a detailed insight into the progress being made by their protégés.





INSIGHTS AND INSPIRATION



Preparing for professional life

Pupils learn about the world of work throughout their time at Schloss Neubeuern. The focus on careers reaches its peak in Year 10, with internships offered by members of the school's global alumni network used to give pupils a new perspective on what the future holds. A fascinating series of talks attended by all classes and each followed by a Q&A session gives pupils a feel for the broad of spectrum of exciting – and in some cases unusual – career opportunities available to them. Tours of local companies, video conferences with schools and businesses throughout the world and a choice of vocational pathways provide a wealth of opportunities for personal development. Pupils at Bavarian grammar schools are also required to complete major work experience and academic projects that inform their academic and professional choices. Schloss Neubeuern fulfils its responsibilities in this area by offering a selection of inspiring partners and topics. Even lower school pupils are taught entrepreneurship as a separate subject, thus giving them a playful insight into the realities of professional life at an early stage.

OUTSIDE THE BOX



The Horizons programme

Interdisciplinary, multi-age-group work is not only a wonderful opportunity for pupils to take new paths and expand their horizons, but also an important counterpoint to everyday school routine. Pupils can choose from a variety of exciting activities grouped into themed blocks such as sport, music/creativity and academic pursuits. Wednesday afternoons are set aside for nothing but these activities – no strict timetable, no predefined break times, open-ended sessions. The emphasis is on understanding rather than learning by heart, with activities designed to promote shared peer-assisted progress rather than one-way traffic from teacher to pupils. Practical elements play a key role, and the classroom is not the only place where learning takes place – excursions, projects, seminars and competitions are the rule and not the exception. The invitation of external specialists opens the school up to the wider world and paves the way for fascinating encounters and fresh ideas.





INTERNATIONAL OUTLOOK PREPARING FOR A SHARED WORLD



Global Thinking

Internationality has a long tradition at Schloss Neubeuern. Around 35 per cent of boarders are from overseas – for example Mexico, China, Russia or Spain. Although the majority remain at the school until gaining their university entrance qualifications, some only join for a year in order to gain valuable international experience. It goes without saying that respectful coexistence and an unprejudiced approach are woven into the fabric of Schloss Neubeuern. Pupils benefit from their time as part of our close-knit community long after they leave, and their unbreakable friendships are an important feature of our vibrant global network. We are proud to have been awarded "School Without Racism" status in 2018, and even prouder that this was the result of a pupil-led programme. Our worldwide student exchange programme gives pupils the chance to develop and refine their cultural intelligence, which is one of the key challenges in our globalized world.

GROWING TOGETHER – STEP BY STEP



The International Department – a unique school model

What originally began as extra tuition for international pupils has gone on to become a highly effective system enabling pupils from around the globe to take part in normal lessons at Schloss Neubeuern. The 5 teachers tasked with the careful integration of roughly 70 pupils from around 20 countries into everyday school life possess excellent language skills and a fine-tuned understanding of the cultural differences involved. Children able to speak little or no German initially join us as guest pupils and concentrate on learning the language before beginning to take part in normal lessons depending on their progress. All international pupils are fully integrated into their class within six months, and continue to receive extra lessons in German as a foreign language until they reach the sixth form. The outstanding school-leaving qualifications gained by our international pupils speak for themselves.

42% of the class of 2017 were international pupils. >







 **CLOSE TO NATURE**
THE BENEFITS OF A DIVERSE REGION



Neubeuern on the Inn

It is easy to understand why Neubeuern was once crowned "Germany's Most Beautiful Village". The glorious mountains and lakes located right on our doorstep are more than just a feast for the eyes, and also provide boundless inspiration for school projects and excursions as well as a broad range of leisure activities. Teachers and mentors responsible for younger pupils in particular draw huge benefit from the huge range of opportunities available in the direct vicinity. Visits to local farms, sledging, snowshoe hikes and school excursions can all be arranged at short notice.

Pupils ideally spend nine years of their life at the heart of this tranquil countryside. And anyone who spends their days surrounded by such wonderful nature automatically develops a lasting desire to protect and preserve it. The view out into the expansive Inn Valley fills the beholder with a sense of infinite freedom. Just standing here and taking a few deep breaths is often the perfect antidote to the stress of the day.

FOOD FOR THOUGHT



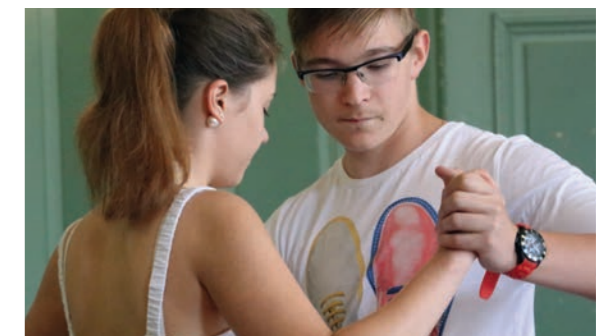
Good food is a matter of principle

We place considerable importance on the food served to the school community, and strive to adhere to the principles of the Slow Food movement: Good, clean, fair. We also make every effort to not only significantly reduce the amount of meat we eat, but also know exactly where it comes from when we do. We therefore use regional and seasonal ingredients wherever possible. Sustainability and the discussion and implementation thereof should be woven into the fabric of any good boarding school. Topics such as waste prevention, waste separation and the efficient use of energy and water accompany us throughout the school day and face us with a number of challenges, not least in connection with the maintenance and operation of our historic home. As a result, initiatives such as a bee-friendly meadow and an insect hotel on the school site are used to help even our youngest pupils develop a sense of the importance of unspoilt nature.





CLOSE TO PEOPLE SELF-EXPLORATION AS PART OF A STRONG COMMUNITY



Time and space for talents to blossom

From music to painting, from football to tennis: Afternoons and evenings at Schloss Neubeuern are filled with an exciting range of guilds. Working out exactly where your talents lie is not always an easy task, but Neubeuern always seems to bring out the best in its pupils – whether in a sporting context, as a member of one of our artistic-musical guilds, over a spot of soldering and programming in our Robotics Club or simply while discussing the issues of the day with their peers and mentors. School teams in a variety of sporting disciplines – for example climbing, mountain biking, tennis, golf, hockey, football, basketball, handball and volleyball – also cultivate a special sense of solidarity among our pupils. Arts and crafts, music and a diverse programme of social events (delivered after school hours and at weekends) are not only a welcome change, but also an invaluable source of experience and knowledge that will stand pupils in good stead later in life.

FORGING FRIENDSHIPS THAT LAST A LIFETIME



A moment shared is a moment treasured

It is not unusual for boarders to spend each and every day in the company of other pupils and members of staff. In the case of Schloss Neubeuern, a school population of just 210 pupils and around 100 members of staff means it is no exaggeration to refer to the school as one big family. Centrally located buildings and short routes between boarding houses, classrooms and sports facilities place every single pupil at the heart of the school community. Boarding groups see younger and older pupils live side-by-side and keep a watchful eye on each other. Although boarders are allowed to go home every other weekend, the fact that a large proportion of them come from a long way away means that weekends are packed with opportunities to not only engage in a range of leisure activities, but also forge and strengthen friendships with fellow pupils. Children in years 5 and 6 can opt to spend 5 days at school and go home at weekends.





TEACHING THE VALUE OF VALUES FOSTERING SOCIAL SKILLS



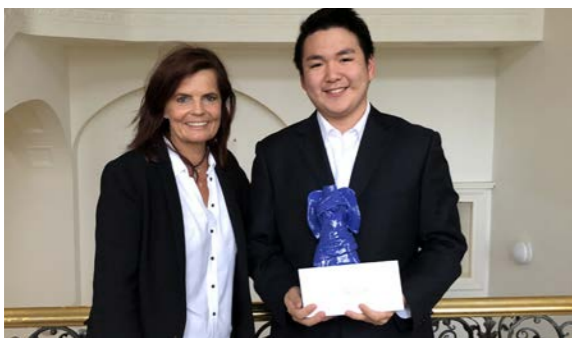
Learning to take responsibility

Mutual respect is our highest priority. It is not simply a matter of manners and etiquette, but of fundamental ethical values that pupils are encouraged to contemplate in settings such as the evening assemblies held in our chapel.

Social responsibility means helping one another and taking responsibility for tasks within the school community. From clearing dinner tables to putting out fires or acting as class spokesperson – at Neubeuern everyone lends a hand. This empowers our pupils to develop into socially competent, open-minded personalities. From middle school upwards, pupils are required to perform a social service in addition to their guilds. This might involve becoming a buddy for a new lower school pupil, joining the Castle Fire Service or First-Aid Guild or helping out at a care home or a children's hospital. Their experiences hone them into rounded personalities who are more than prepared to face the challenges of adult life.

< Schloss Neubeuern Fire Service Guild (including the castle's own fire truck). The Castle Fire Service is well known throughout the region and participates in real-life emergency operations.

GIVING SOMETHING BACK



Networks and scholarships

When former pupils look back on their time at Schloss Neubeuern, their most abiding memories are of joyful moments and a large circle of friends that is built to last. It should therefore come as no surprise that entire generations of alumni remain in close contact with not only each other, but also their alma mater itself. Networks are an indispensable part of modern life, and pupils at Schloss Neubeuern lay the foundation for a global network that will continue to be of benefit to them throughout their lives. In accordance with the charter of our School Foundation, we strive to ensure that a Schloss Neubeuern education is also available to the children of parents who are unable to cover their fees in full. Our efforts in this area are actively supported by our Alumni Association and former pupils, whose generous donations fund scholarships that enable as many young people as possible to benefit from the same opportunities they themselves enjoyed.





A SECOND HOME – NOW AND FOREVER



The ideal foundation for a successful life

It is a joy and a privilege to remain in close contact with most of our pupils for many years after they leave us. Now, in the digital age, news of great triumphs or painful defeats often reaches us a result of interaction on social networks.

The most treasured encounters nevertheless remain those that occur in person at alumni meetings, the Summer Party or during a spontaneous stop at the castle en route to Austria or Italy. Time and again, it is clear for all to see that the success of our former pupils is attributable not to the grades they achieved, but to the unique personality they developed during their time in this magical place. We are always grateful to have had the opportunity to play our part – and proud to see that we must be doing a lot right.



A UNIQUE VOYAGE OF
DISCOVERY



For children aged 12-14

Our exclusive International Summer Camp offers a small group of 32 girls and boys a unique opportunity to gain first-hand experience of life as a boarder while enjoying a captivating daily blend of schoolwork, projects, sport and creativity. The magical scenery of our fairy-tale castle nestling in the Alpine foothills provides the backdrop as they embark on a voyage of discovery into life at a modern boarding school. They are not only delighted to spend lots of time with their peers, but also inspired by our vibrant international community and the positive atmosphere it creates. Participants are accommodated in delightful double rooms with en suite bathrooms and looked after by a team of dedicated teachers, mentors and former pupils. All of this and more combines to give them an experience they will never forget. Many of them return just a year later to enrol as permanent members of our castle family.





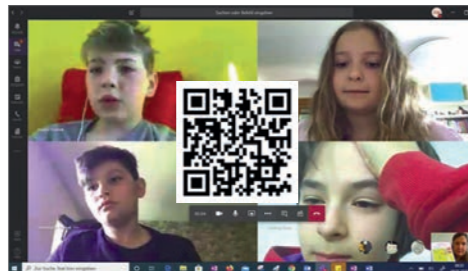
SELECTED MEDIA



360° tour – visit Schloss Neubeuern



The Schloss Neubeuern webcam



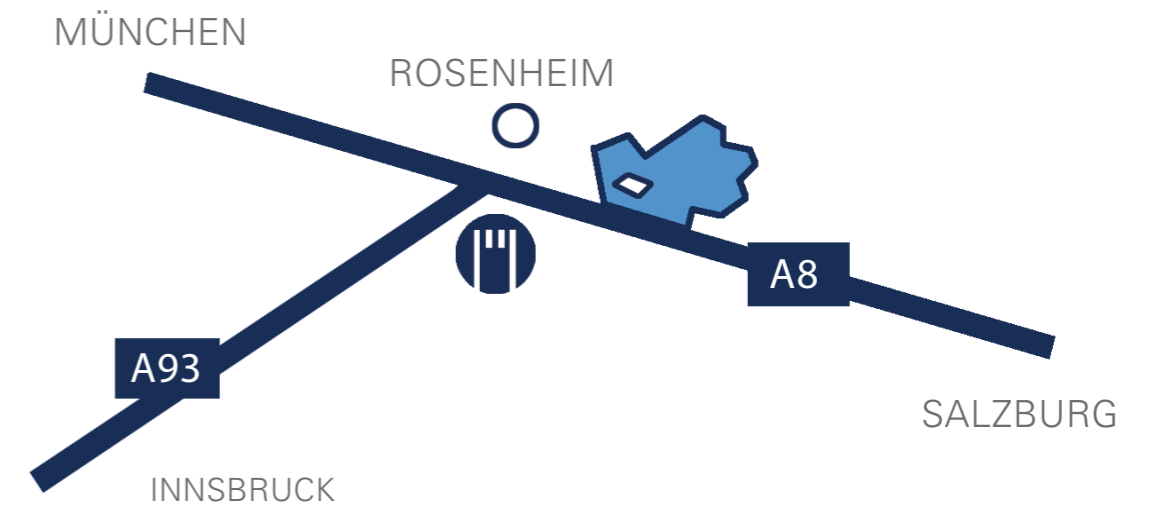
Online learning in 2020 – Schloss Neubeuern and the coronavirus crisis



Trailer for the International Summer Camp



INSIDE OF US – pupils' personal insights into life at Schloss Neubeuern



IMPRINT

All rights reserved

© Schloss Neubeuern, 1. Auflage 2020
Schlossstraße 20, 83115 Neubeuern

Concept and design

Katrin Burkamp, ghost.brandmanagement
Dreimühlenstraße 9, 80469 München

Printing and production

Druckerei Vogl GmbH & Co. KG
Georg-Wimmer-Ring 9, 85604 Zorneding

Paper powered by Büttenpapierfabrik Gmund, Mangfallstraße 5,
83703 Gmund am Tegernsee



SCHLOSS NEUBEUERN
CONFIDENT. UNIQUE. COSMOPOLITAN.

Schloss Neubeuern Boarding & Day School
Schlossstraße 20, 83115 Neubeuern
Telefon 0049 (0) 8035-9062-0, info@schloss-neubeuern.de
www.schloss-neubeuern.de

PAPER POWERED BY

GMUND

